

2 Great Choices for your Recycled Water & Rainwater Installations

Existing PE Polyethylene 20mm System

- ✓ One size 20mm pipe for all applications.
- ✓ Unique range of specialised fittings.
- ✓ Attractively priced pipe and fittings range to help save \$\$\$.
- ✓ Cannot be accidentally cross-connected to the potable water supply.

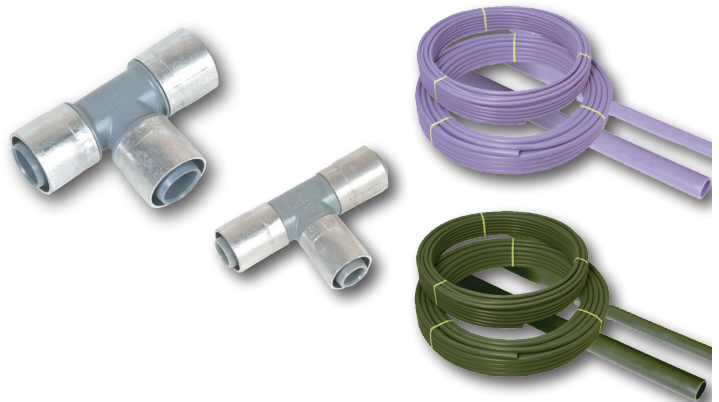


OR

Polybutene-1 (PB-1) 18mm & 22mm System

NEW!

- ✓ Available in 18mm and 22mm pipe sizes to help deliver cost effective flow rates.
- ✓ Able to be used with the existing Buteline potable (grey) fittings range.
- ✓ No additional tooling needed.
- ✓ Reduces your inventory holding and storage costs.



Contact your local merchant or Buteline representative for more details.

